



Comic Transitions

These are ways comics move the story from one panel to the next. Each type changes how the reader experiences time, action, or focus.

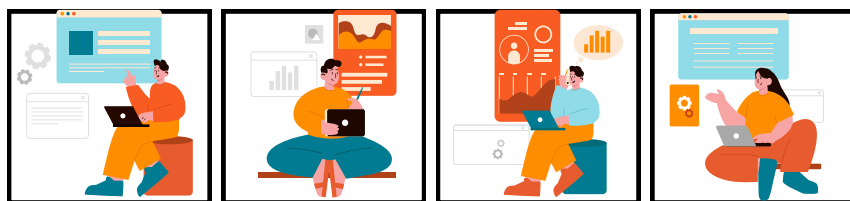
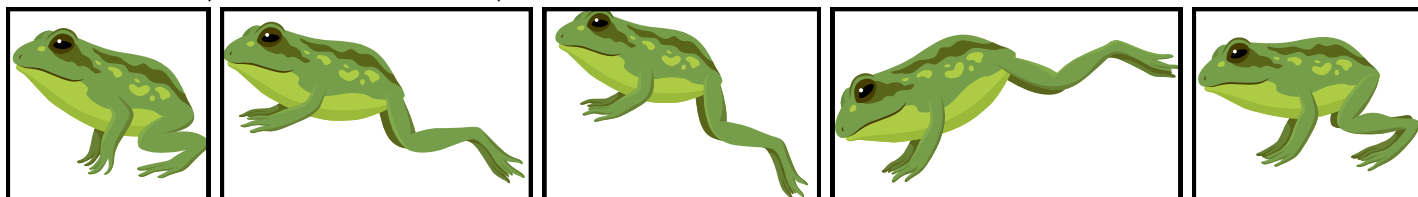


Moment-to-Moment

Shows tiny changes in time, like blinking or turning a head. The reader doesn't need to imagine much between panels because the action is very slow and detailed.

Action-to-Action

Follows one character doing a series of steps, like waking up, getting dressed, and leaving the house. Each panel shows a new part of the same action.



Subject-to-Subject

Stays in the same scene but switches focus between characters or objects. It's like cutting between speakers in a conversation or showing different reactions



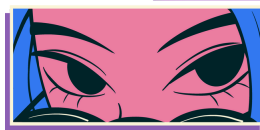
Scene-to-Scene

Jumps across time or place, like going from home to school or morning to night. The reader has to imagine what happened in between.



Aspect-to-Aspect

Shows different parts or views of the same moment, like zooming in on a clock, a face, and a backpack to set the mood or show details.



Non-Sequitur

Panels don't seem to connect logically, but they might still be funny or surprising. The reader uses imagination to make sense of it, or just enjoys the randomness.

